

Land Use (Future Land Use Plan)
Calaveras County Water District

- Agriculture Preserves
- Community Center
- Future single family residential20acre
- Future Single Family Residential5acre
- Highway
- Mineral Resource Area 2B
- Residential Center big
- Residential Center Small
- Timberlands/Mineral Resource Area
- Wildlife area

Land Use (General Plan)
San Joaquin County

- Commercial
- General Agriculture
- Industrial
- Limited Agriculture
- Public / Institutional
- Public Institutional
- Residential
- Resource Conservation

Secondary Highways
 Major Roads
 Primary Ramps
 Primary Highways
 Minor Roads

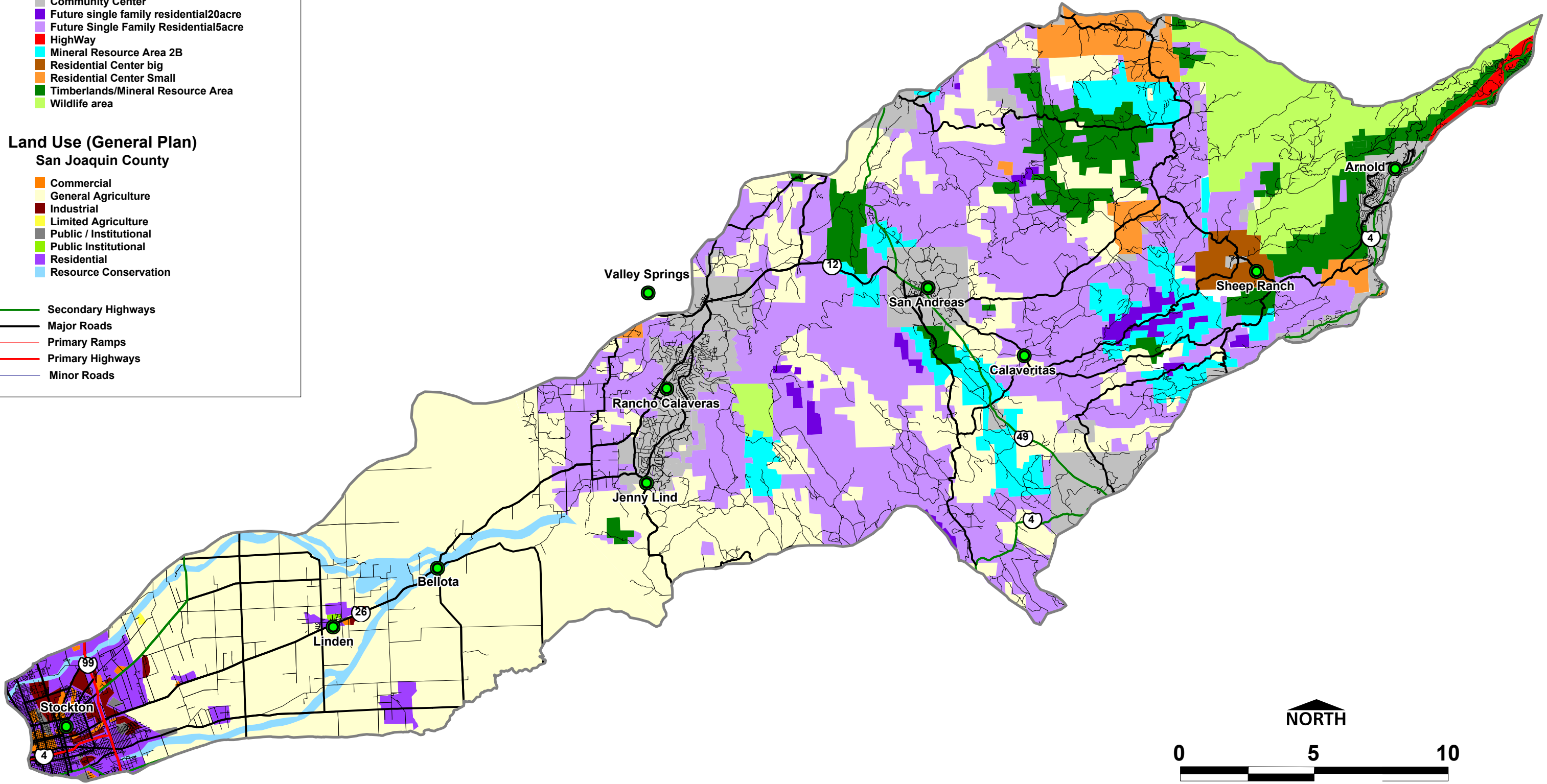


Figure 3-1. Land Use Patterns